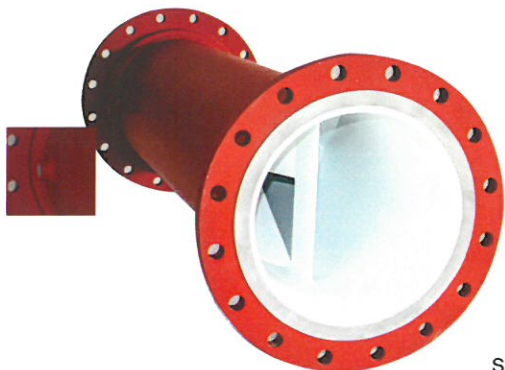
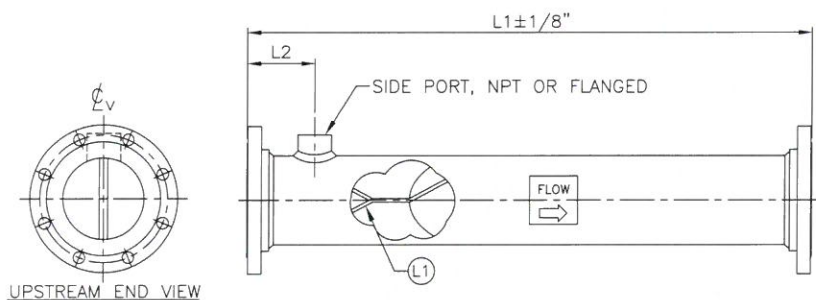


KOMAX "A" SERIES INLINE STATIC/MOTIONLESS MIXERS

- GUARANTEED PERFORMANCE
- LOW COST



These pre-engineered mixers are available from stock and are conservative designs for a wide variety of mixing tasks. They are supplied with two, three, or four mixing elements. See design graphs on next page. Each mixer has 150 lb. flanges and a built-in additive port. This port may be used for a threaded connection to a male pipe thread, or converted to a flanged connection using a nipple and a threaded flange. Injectors and quills may be purchased separately and installed in the side port for special mixing situations. A unique flow straightener is built right into each mixer to eliminate any downstream centrifugal effects. This allows sensing probes to be located directly downstream of the unit. Mixers are stocked in carbon steel, type 316 stainless steel, PVC and fiberglass. Dimensions for all "A" SERIES mixers are listed below.



HOUSING: CARBON STEEL — A53 Grade B or equal
Schedule 40

STAINLESS STEEL — Type 316 Schedule 40

P.V.C. — Schedule 80

F.R.P. — 150 psi rated filament wound

FLANGES: ANSI B16.5 — 150 lb. Drilling

CARBON STEEL &
STAINLESS STEEL — Raised Face

P.V.C. — For Sizes: 3" & Larger — Raised Face
Smaller than 3" — Flat Face

F.R.P. — Flat Face

TABULATION BLOCK

LINE SIZE, NPS "D"	L 1 (IN)				L2 ± 1/8"	SIDE PORT NPT
	2 ELE	3 ELE	4 ELE	5 ELE		
3/4	6	7	8	9	3	1/4
1	7	8	9	10	3	1/4
1 1/2	10	12	14	16	3	1/2
2	11	13	16	19	3	3/4
2 1/2	13	16	19	22	3 1/2	1
3	15	19	22	24	4	1 1/2
4	19	24	29	34	4 1/2	1 1/2
6	17	25	32	40	5	1 1/2
8	22	32	42	52	5 1/2	2
10	27	39	52	64	6	2
12	32	47	62	77	6 1/2	2

ALL DIMENSIONS ARE IN INCHES

NOTES:

1. ALL MATERIAL OF CONSTRUCTION AND FLANGE RATINGS AVAILABLE IN ALL SIZES.
2. MULTIPLE INJECTION PORTS (NPT OR FLANGED) CAN BE PROVIDED.
3. PLEASE CONTACT KOMAX FOR FURTHER ASSISTANCE REGARDING SIZES OVER 12" DIA., DIFFERENT MATERIALS OF CONSTRUCTION, CORROSION RESISTANT COATING, LININGS FLANGE TYPE, FLANGE RATINGS AND ETC.

COMMON MATERIAL
IDENTIFIER TABLE

SYMBOL	MATERIAL
C	CARBON STEEL
S	STAINLESS STEEL
F	FIBERGLASS
P	PVC
CP	CPVC

"A" SERIES NUMBERING SYSTEM

A TABLE 1 — XXXXX

